

# News@SlipperyRockUM.org

Slippery Rock United  
Methodist Church

February 2012

Epiphany/Lent

## When Being In Community Leaves A Mark...

### Inside this issue:

Calendar	12
Worship Info	2
Camping	8
Youth	6
King's Daughters	5
Kidz Newz	3
Worship Arts	10
Brady Hills Bunch	5



When is the  
last time it  
cost you  
something to  
be Christian?

What does it mean to be faithful disciples of Christ? Is it as easy as being a church member —our name on a list with no implications for our behavior and beliefs? Is it as hard as dying for your faith as Christian martyrs have in the past — and are still doing today for faith's sake? Or is there a place in between those two extremes for you and me to live extraordinary lives of discipleship and witness in our every day?

Mark Barrett in his book Crossing: Reclaiming the landscape of our lives shares the experience of being a Benedictine monk through the "interruptions" of community-wide prayer times ordered throughout the day. Just because you are a priest, pastor, monk, or disciple doesn't mean that you don't struggle with issues of faith and those same issues won't present themselves in the community. Waking with the early dawn for morning prayers is a definite struggle for the human body. We love to

linger in sleep. And yet in the early prayers the soul struggles with more than sleep...

The company of others, the demands and rewards of my job, the fact of a social position and the status that accompanies it, priesthood, or just my ability to clothe myself in the trappings of illusion, will disguise the nakedness of the first moment of the day. But for now, I am on my own, out on the margins of the day and exposed to the realities of myself.

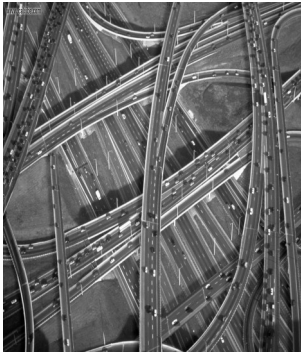
(pg. 13)

What is the mark that faith should leave on our souls and the souls of those in community with us? A nakedness of person, a bruise of shame, a sting of commitment, a callous of repeated prayerful discipline— what the mark to identify you to the world as a faithful humble servant of Christ? And more importantly, can others see and witness the marks you bear? We depend upon each other, we need to know if you are with us, where's the mark?

### Crisscrossing Lent: Daily Lenten Devotionals Tim Weseman

Coming Soon!  
Pick up your copy at  
the back of the sanctuary.





## February Worship Highlights Epiphany/Lent2012

### February

#### 11AM Altar Guild

Jane Prokay  
Ryan Prokay

#### 11AM Ushers

Sumner Forrest

When is the  
last time you  
can remember  
faith being a  
lonely  
experience?

**February 5** "Sustaining Ministry" Mark 1: 29-39  
First Sunday ~ Communion  
10am Scripture: Shawn Hanna/Ruth Hoffman  
Power Point: Laurie Williams  
Sound: John Greaves

**February 12** "Great Expectations" Joshua 1: 1-9  
9am Scripture: Sandy Fox  
Power Point: XXXX  
Sound: Tom Breakiron  
11am Scripture: Val McKinstry  
Power Point: XXXX  
Sound: John Greaves

**February 19** "Thin Places" Mark 9: 2-9  
9am Scripture: Marilyn Blinn  
Power Point: XXXX  
Sound: John Greaves  
11am Scripture: Laurie Williams  
Power Point: XXXX  
Sound: Dean Wells

**February 22** **Ash Wednesday**  
"X Marks The Spot"  
Imposition of Ashes

#### Lent 2012

#### Crossings: When Being In Community Leaves A Mark

**February 26** "Blessed Connections" Genesis 9: 8-17  
9am Scripture: Wilma Cavill  
Power Point: Paul Mowrey  
Sound: Tom Breakiron  
11am Scripture: Verna Allen  
Power Point: Dylan Parson  
Sound: John Greaves

# KIDZ NEWZ

## Kidz Time and Kidz Corp February Schedule

February 5

“Do You Know The Bible?”  
Memorizing the first 5 books of  
the Old Testament  
“DISCIPLE”  
**No Kidz Corps**

February 12

“Hallelujah—Your Love Makes Me Sing”  
Offering: AVS Dinners  
“Rock Solid”  
**Kidz Corps Activity: Computer**

February 19

“Hosanna To The King”  
Food Cupboard Donation: Soup  
“He’s Got The Whole World In His Hands”  
**Kidz Corps Activity: Cooking**

February 26

“Cry Of My Heart”  
Global Village: France, Germany  
“Vast Voyage”  
**Kidz Corps Activity: Crafts**

## What are the first 5 books of the Old Testament?

**Genesis  
Exodus  
Leviticus  
Numbers  
Deuteronomy**

**Get ready for Kidz Time on February 5th!**

### February Teachers

Stefanie Mowrey  
Nancy Mowrey

Thanks for  
volunteering!



**Look for the new  
Family devotional for Lent!**

**All Around Jerusalem  
Sticker book and Map**

## Food and Fellowship First Sundays following worship services

As we work on Loving Relationships at SRUMC, what better way to get to know and love one another than by dining at Table with family and friends? We are blessed to have the following groups offer a meal to us, make sure you shower the kitchen workers and servers with appreciation!

- February 5—Fellowship Committee
- March 4—Missions Committee (Sandy Wakefield)
- April 1—United Methodist Men
- May 6—Worship Arts
- June 6— The King's Daughters



### Food and Fellowship Menu February 5

**Sauerkraut**  
**Pork and kielbasa**  
**Mashed potatoes**  
**Veggies and rolls**  
**Cake**

**Kids Table**  
**Macaroni and Cheese**

### Single Food Adventures February

**February 26th at Noon**  
**Family Traditions**  
**Slippery Rock, PA**

With the weather becoming unpredictable, we are opting for closer venues for lunch. Come have a wonderful time of food and fellowship! For questions, talk to Pastor Pam.

## Next UMM Breakfast February 19 at 7:30am

Join us for breakfast as the United Methodist Men prepare together a sumptuous meal to begin the day! Contemporary issues and good conversation is bountiful around the table. This breakfast is always a great time!



## Brady Hills Bunch February 25th at 11:30am

Join us on a Saturday morning at Brady Hills Mobile Home Park! Always a great time of fun, we hope that you have time to join us. Meet us at the community center for lunch, activities, bible stories and more!

## United Methodist Women Upcoming Events

February 13—7pm

We're going to debrief from our discussion on human trafficking. Also, let's have a conversation about a women's spring retreat too!

May 5th— Women's Spring Retreat

Guest Speaker: Rev. Cynthia Schneider  
Christ UMC: Bethel Park

## King's Daughters Notes (from Jan. newsletter)

The King's Daughters held their church Christmas Party on Dec. 15<sup>th</sup> at 6:00 P.M. There were 34 adults and 3 children present. Fran opened the party by welcoming everyone. Sue Greaves and Libby Stoughton had devotions by lighting candles and reading the Christmas story. Nora Mae Smith then returned thanks for the meal. The delicious dinner was catered by Family Traditions. After dinner, the men and woman's gift exchange was held. Our secret pal gifts were then exchanged. With the gracious and comedic team of John Greaves and Bob Watson, we were able to raise \$406.00 from our pound auction. Many great and funny gifts were auctioned off. The proceeds for this auction will benefit the youth of our church for their SPARKS trip in January. Thanks so much to John & Bob. A good time was had by all with the visiting of old friends and the sharing of the Christmas season. Merry Christmas to all from the King's Daughters.

## SRUMC Youth News

Did you know...

\*that every first Monday is Pizza Night at youth group? Yep, the group either orders pizzas or makes their own. You can help by donating soda, money or pizza supplies. Or, you can drop by the youth group gatherings on Monday night to sample pizza! Contact Molly for more questions.

\*SPARK was a fantastic time for those who attended in January. Thanks so much for all the support! It was a life-changing event.

### Mission Fundraisers —

We have a few youth who are being called into mission trips this summer, so we need to begin raising funds for their travels. You can help by supporting the following events:

Valentine's Day Bake Sale  
Sunday, February 12th

Food and Fellowship  
Sunday, March 4th

Let's invest in those who have a heart for missions!

### Youth Group Girls Event

**Do you have a heart for the outdoors? How about sharing that joy with a young woman from the youth group? On February 18th Molly and Karen Pierce (SR Community Librarian) will accompany youth to Chapman State Park in Claredon, PA for a one-day event of outdoor learning. Topics include: Ice fishing, turkey hunting 101, winter bird hike, cross-country skiing, snowshoeing, geocaching and snowmobiling. Friday night we'll travel up to Warren, PA and be a guest in a friends' home. Future events with the National Wild Turkey Federation are only \$15. For more information, contact Molly Breakiron (and not Pastor Pam — LOL!!!) at 724-816-8452.**

## FROM THE FINANCE COMMITTEE (from Jan. newsletter)

The congregation is to be commended on their generous support of our many endeavors during 2011. Our largest project was probably the purchase of the new parsonage, and it was made possible by so many gifts from you. We have met our current expenses and have ended the year with no outstanding bills. Our members are continuing to meet their pledges for Imagine No Malaria and the mortgage payment each month. Many of you have also supported other specials such as Brady Hills, Samaritan Purse (Christmas shoe boxes), Food Cupboard, Spark Conference, AVS dinners, Christian education, and Kelly Maxwell's mission trip to name some. Although we did not pay our Mission Share in full, we did pay over two thirds of the designated amount. We contributed more than \$13,000 and gave to other Conference Mission specials including Imagine No Malaria of more than \$8,000.

As we begin the New Year, our needs will continue. It is our goal to pay more than our monthly mortgage payment so that we can decrease the principal on our mortgage. Requests will be made for support of special projects. Our designated amount for our Mission Share for next year is \$21,078.

We pray you will continue to make your giving to the church a priority in your life. Please think about the personal testimonies that were made by some of our members with the message that it is more important for you to give in your relationship with God than it is for the church to receive your gifts.

Thank you to each of you for a great 2011.

## Thanks !

Many thanks to all who contributed to Slippery Rock UMC in 2011. If you would like a copy of your individual contribution statement for income taxes or just for your information, please contact Claire Barron at 724-794-8132.

## It's not too late to consider....

A monthly pledge of \$20

A monthly payment of \$625

Thank you for your continuing support as we purchase 430 West Water Street in full!

Christian Life Enrichment Classes  
Sundays 2-5pm  
March 4-April 1  
Harmony-Zelienople United Methodist Church

Classes offered:

- Mission Outreach
- Creating Faith Communities
- Lay Pastoral Care Giving
- Basic Lay Speaking
- Lay Preaching

For more information, contact Pastor Pam.



**Do you like to ride horses?  
How about a whole  
weekend of horse riding?  
Join Molly Breakiron at  
Wesley Woods from  
June 1-3. Cost \$189. Plan on  
10 hours of riding time. You  
must be able to lift a saddle.  
Call Molly if you have any  
questions.**

**When is the last time you  
realized being in community  
with others who believe  
grounds and saves you?**

**The Camping Brochures are here!**

**Pick up your copy at the back of the  
sanctuary now! Scholarships are  
available to any child, youth or adult  
interested in attending camp this summer.  
Contact the church office for more  
information.**

# Great Ways to Serve Faithfully!

**SRUMC Salvation Army  
Bell-ringing total for 2011**

**\$1225**

**Nice job everyone!  
Thanks for signing up during  
a very busy season many will  
be helped from our efforts.**

## Food Cupboard Update

### December Stats

Families	182
Children	183
Adults	272

**Food Cupboard  
Monthly Collection  
Toilet Tissue**

## Hospitality Between Services

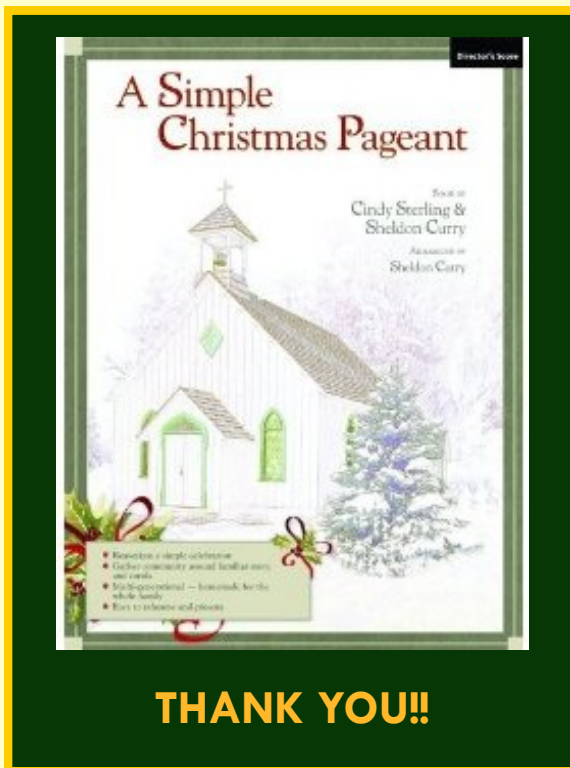
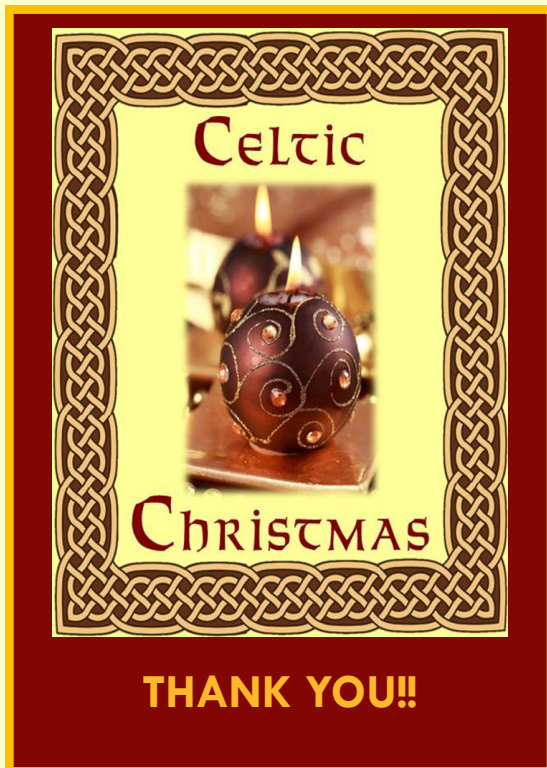
We're having a great time in Hospitality Between Services these days! All kinds of wonderful goodies are showing up on our table — birthday cakes, baptism cakes, dip and chips, chocolate and more... You can help by bringing something to share. To sign up or help with donations of goodies, talk to Molly Breakiron. Remember, this is a great place and time to talk about you're A-Ha moment!





## Worship Arts at SRUMC

A Belated New Year's Thank You for a  
Wonderful Advent and Christmas!



"A Simple Christmas Pageant....Rehearsal" and "A Celtic Christmas Celebration" are both only a memory now...but what a wonderful memory they are!! How could we ever forget the angels and animals at the manger or the beautiful music? How could we forget all the joy of we felt at the 10am service on December 4th and at the Christmas Eve services? Every year is special but because of all the amazing talent and many willing hearts of so many, 2011's Advent and Christmas programs were more than special...they were extraordinary!! May God bless you all with a New Year full of His grace and goodness. Thank you! -Wally & Dean Wells

**Lent and Easter Rehearsals begin on Wednesday, February 15th at Choir  
and on Thursday, February 16th at Band**

# Worship Arts at SRUMC

Last month, as we were preparing the January newsletter, we experienced one of those "technical difficulties" that sometimes occur when working with technology.

If you work with computers you know that can mean just about anything...mostly it means you've lost most or all of your work! It's often followed by a gasp that soon expels a loud and painful cry of NOOOOOO!!!" You may have even heard something far off in the distance and wondered, "What was that?" Well, now you know.

Because of that "difficulty," I am a month late in posting



this much deserved THANKYOU to all of the dedicated and committed volunteers that helped make the 2011 Advent and Christmas season so very meaningful. We really can not say thank you enough.

Now Ash Wednesday and the beginning of the 2012 Lenten Season is only a few short weeks away. Tim flies, doesn't it?

More information will soon be available about our Lent & Easter preparations. Keep your Worship Arts Ministry in prayer and if you have talents you want to use, please let us know! There will be opportunities for children, youth & adults of all ages to participate.

"...We are like the various parts of a human body. Each part gets its meaning from the body as a whole, not the other way around. The body we're talking about is Christ's body of chosen people. Each of us finds our meaning and function as a part of his body."  
Romans 12:4-5

Blessings,  
Wally & Dean Wells

---

---

---



# February 2012

Regular Weekly  
Activities To Enjoy...

**Monday**

6:30pm— Youth

**Tuesday**

10am Prayer  
Group

**Wednesday**

2pm Ministry Team  
7pm—Choir

**Thursday**

6pm Zumba  
6pm—Praise  
Band

**Sunday**

9am Worship  
9:30am CE  
11am Worship

	Sun	Mon	Tue	Wed	Thu	Fri	Sat
				1	2	3	4
				7-Passionate Worship	7-Trustees		
	5	6	7	8	9	10	11
			7-SPRC	7-Grief Small Group			
	12	13	14	15	16	17	18
					4:30- Community Dinner		
	19	20	21	22	23	24	25
	7:30-UMM						Noon-Brady Hills Bunch
	3pm- Confirmation			7-Ash Wednesday Service			
	26	27	28	29			
	Noon—Single Food Adventurers						

**We're on the Web!**  
[SlipperyRockUMC.org](http://SlipperyRockUMC.org)

Slippery Rock UMC  
130 Franklin Street  
Slippery Rock, PA  
16057

Office: 724-794-4500  
Parsonage:  
724-794-4501

Email:  
[srumc@zoominternet.net](mailto:srumc@zoominternet.net)

Keep In Touch!



What's the mark you intend to make on this world?  
February 22-April 8